

IMPORTANT!

PLEASE READ THIS MANUAL CAREFULLY BEFORE PROCEEDING.
AFTER READING THIS MANUAL, SAVE THESE INSTRUCTIONS
FOR FUTURE REFERENCE.

If you would like a catalog of our latest products please
visit our website at
www.advancedelements.com
or call Toll Free 866-262-9076

PLEASE COMPLETE THE OTHER SIDE OF THIS
WARRANTY REGISTRATION CARD AND RETURN TO ADVANCED ELEMENTS, INC.

PLACE
STAMP
HERE



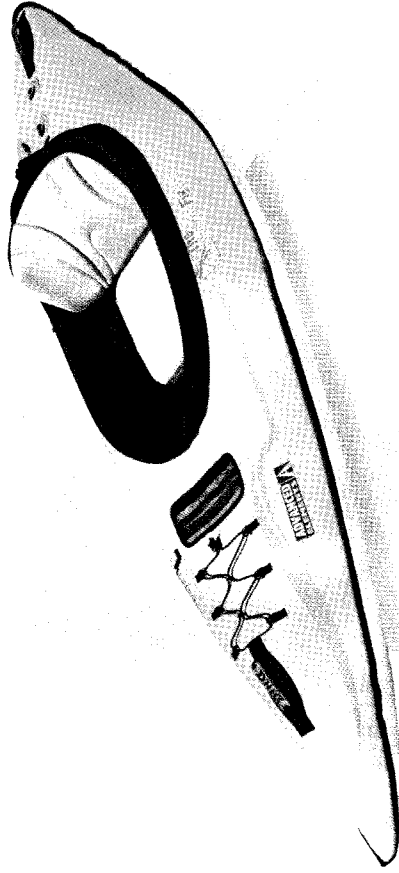
P.O. Box 5128
Concord, CA 94524
1-866-262-9076
www.advancedelements.com
Email: info@advancedelements.com



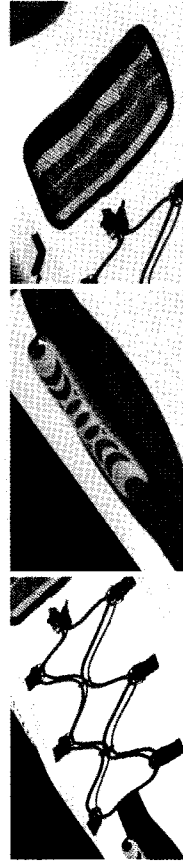
**DRAGONFLY™ XC
INFLATABLE KAYAK**

**OWNER'S MANUAL
MODEL AE1021**

PATENTED AND OTHER PATENTS PENDING



1 PERSON KAYAK



IMPORTANT!

PLEASE READ THIS MANUAL CAREFULLY BEFORE PROCEEDING. AFTER READING
THIS MANUAL, SAVE THESE INSTRUCTIONS FOR FUTURE REFERENCE.



INTRODUCTION

It is our goal, at Advanced Elements, to develop new and unique paddle sports products that enhance our customers' outdoor experience. Our focus is on designing and manufacturing "Inflatable kayaks with cutting edge technology". Our kayaks incorporate many different materials and components and deliver high performance at a very reasonable price. We are the makers of the AdvancedFrame™ Inflatable kayaks, DragonFly™ Inflatable kayaks and StraitEdge™ Canoe and Kayaks. The AdvancedFrame™ Kayaks are a hybrid of a folding frame kayak and an inflatable kayak. Its bow slices through water like a knife and rivals the tracking of hard-shell kayaks. The stern acts as a skeg increasing the tracking performance. The DragonFly™ kayaks are durable and lightweight. They have built-in rigid forms that increase the performance once it is fully inflated. You can take our inflatables with you anywhere in the world and no roof rack is needed! Keep it in the trunk of your car and paddle whenever you want or pack it into a remote wilderness area and paddle where no one has paddled before. Simply inflate with a foot pump and hit the water in minutes. Please visit our website for more information on our products or to find a dealer near you.




TABLE OF CONTENTS

1. Caution/Safety	4
1.1 Boating Safety	5
2. Specification	6
2.1 Capacity	6
2.2 Features	7
3. Assembly/Inflating/Deflation Instruction	7
3.1 Assembly	7
3.2 Understanding Your Valves	8
3.3 Inflating	9
3.4 Over Inflation	9
3.5 Deflation	10
3.6 Folding	10
4. Guidelines for Usage	10
5. Proper Care and Storage	11
6. Repairs	11
6.1 Repairing Small Punctures and Cuts	11
6.2 Repairing Pinholes	11
7. Troubleshooting	12
8. Statement of Origin	13
9. Declaration of Conformity	14
10. Warranty and Registration	15

1. CAUTION - SAFETY WARNING

Users of this product agree by their use to accept the inherent risks involved in this paddlesports activity and agree to follow all instructions, cautions, and warnings carefully before using this Kayak.

(PLEASE READ CAUTION STATEMENT CAREFULLY)

 CAUTION	<p>SAFETY WARNING:</p> <p>PADDLESPTS CAN BE VERY DANGEROUS AND PHYSICALLY DEMANDING. THE USER OF THIS PRODUCT SHOULD UNDERSTAND THAT PARTICIPATION IN PADDLESPTS MAY INVOLVE SERIOUS INJURY OR DEATH. OBSERVE THE FOLLOWING SAFETY STANDARDS WHENEVER USING THIS PRODUCT.</p> <ul style="list-style-type: none"> · GET PADDLESPTS INSTRUCTIONS SPECIFIC TO THIS TYPE OF CRAFT. · OBTAIN CERTIFIED FIRST AID TRAINING AND CARRY FIRST AID AND RESCUE/SAFETY EQUIPMENT. · ALWAYS WEAR A NATIONALLY APPROVED PERSONAL FLotation DEVICE. · ALWAYS WEAR A HELMET WHERE APPROPRIATE. · DRESS APPROPRIATELY FOR WEATHER CONDITIONS; COLD WATER AND/OR COLD WEATHER CAN RESULT IN HYPOTHERMIA. CHECK YOUR EQUIPMENT PRIOR TO EACH USE FOR SIGNS OF WEAR OR FAILURE. · NEVER PADDLE ALONE. · DO NOT PADDLE IN FLOOD CONDITIONS. · BE AWARE OF APPROPRIATE RIVER WATER LEVELS, TIDAL CHANGES, DANGEROUS CURRENTS, WEATHER CHANGES, AND STRONG OFF SHORE WINDS. · SCOUT UNFAMILIAR WATER; PORTAGE WHERE APPROPRIATE. · DO NOT EXCEED YOUR PADDLING ABILITY; BE HONEST WITH YOURSELF. · CONSULT YOUR PHYSICIAN PRIOR TO BEGINNING YOUR PADDLESPTS TRAINING. · YOU MUST NOT USE ALCOHOL OR MIND ALTERING DRUGS PRIOR TO USING THIS PRODUCT. · FOLLOW THE MANUFACTURER'S RECOMMENDATIONS FOR THE USE OF THIS PRODUCT. · IF ADDITIONAL OUTFITTING IS REQUIRED, USE MANUFACTURER'S APPROVED MATERIALS ONLY; DO NOT IMPAIR ENTRY OR EXIT ACCESS. · READ OWNER'S INFORMATION PACKET PRIOR TO USING THIS PRODUCT. <p>THE USER OF THIS PRODUCT ACKNOWLEDGES BOTH AN UNDERSTANDING AND AN ASSUMPTION OF THE RISK INVOLVED IN PADDLESPTS.</p>
--	---

ADVANCED ELEMENTS, INC.
TOLL FREE: 866-262-9076

Please read this entire manual for additional safety information. Please pay close attention to items marked **DANGER, WARNING, CAUTION, IMPORTANT, NOTICE, NEVER,** and **ALWAYS.**

1.1 Boating Safety



This is the safety alert symbol. It is used to alert you to potential personal injury hazards. Obey all safety messages that follow this symbol to avoid possible injury or death.

! DANGER	Indicates an imminently hazardous situation which, if not avoided, will result in death or serious injury or substantial property damage.
! WARNING	Indicates a potentially hazardous situation which, if not avoided, could result in death or serious injury or property damage.
! CAUTION	Indicates a potentially hazardous situation which, if not avoided, may result in property damage.
CAUTION	Used without the safety alert symbol indicates a potentially hazardous situation, which, if not avoided, may result in property damage.
NOTICE	Indicates installation, operation or maintenance information which is important but not hazard-related.

The precautions listed in this manual and on the craft are not all-inclusive. If a procedure, method, tool or part is not specifically recommended, you must satisfy yourself that it is safe for you and others, and that the craft will not be damaged or made unsafe as a result of your decision. **REMEMBER** - always use common sense when paddling **YOUR KAYAK!**

2. SPECIFICATION

Dimensions:

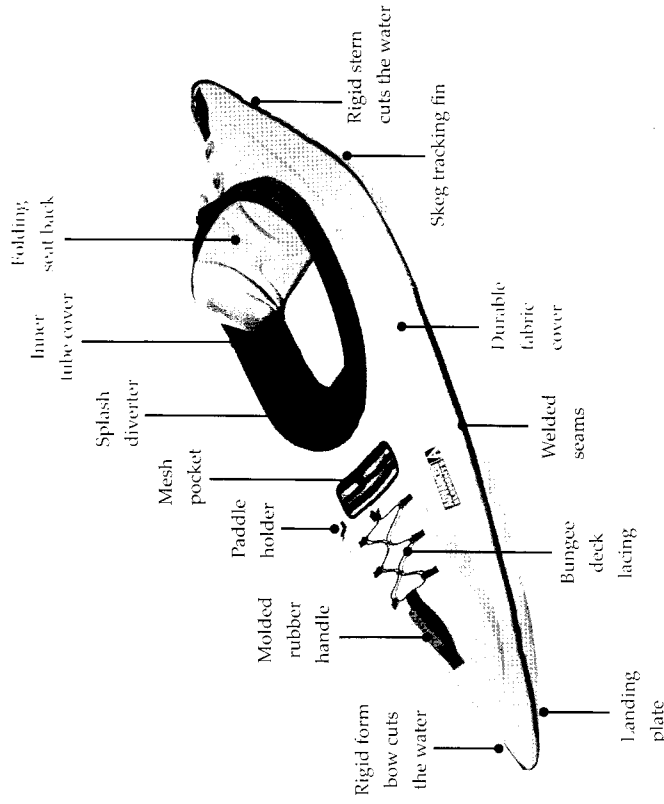
- Length: 8'4"
- Width: 34"
- Weight: 19 lbs (9 kg)
- Max. Person Capacity: 250 lbs (113 kg)
- Max. Persons & Gear Capacity: 250 lbs (113 kg)
- Recommended Pressure: 1.5 psi (0.10 bar)



2.2 Features

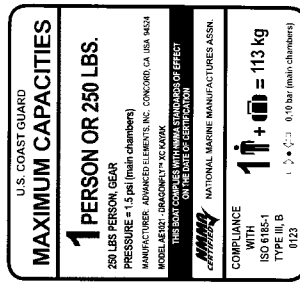
SPECIAL FEATURES:

- XC Design:** Inner tube covers add stiffness and abrasion protection.
- Rigid Bow and Stern:** Built-in rigid panels define the bow and stern and improve tracking.
- Durable and Light:** Unique outer cover provides durability in a lightweight design.
- Easy to Set Up:** New Twist valves and high flow Spring valves allow for quick setup time.
- Comfortable:** High support seat provides comfort for hours of paddling.
- Hull Design:** Landing plate and tracking fin improve performance.



2.1 Capacity

The person/load capacity is determined by the availability of proper seating on the kayak. Acceptable seating determines the number of passengers, not the overall load capacity.



DragonFly™ XC Kayak Capacity Label

⚠ WARNING: Do not exceed the certified maximum capacities under any circumstances. Overloading will reduce freeboard and increase the likelihood of swamping, especially in heavy seas. Overloading causes handling to become sluggish, making it difficult to react quickly.

3. ASSEMBLY/INFLATING/DEFLATION INSTRUCTION

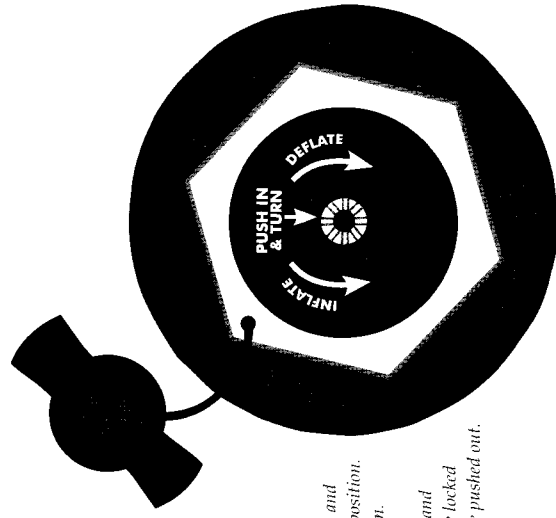
The DragonFly™ XC Kayak has a rigid bow and stern that enhances its performance.

3.1 Assembly

Your kayak comes from the factory pre-assembled. The only assembly you should need to do is attach the adjustable seat.

3.2 Understanding Your Valves

Advanced Elements DragonFly™ XC kayak uses the following valves. The Advanced Elements spring valve has the function and durability of other military type valves and is compatible with most standard pumps. The lock nut holds the valve in place with the cover for easy inflation. The following figures will have details on how to operate the valves.



NOTE:
Deflate - Push-in center stem and rotate clockwise to the locked position. Valve stem should be pushed-in.
Inflate - Push-in center stem and rotate counter-clockwise to the locked position. Valve stem should be pushed out.

Figure 1. Inflate/Deflate Spring Valve

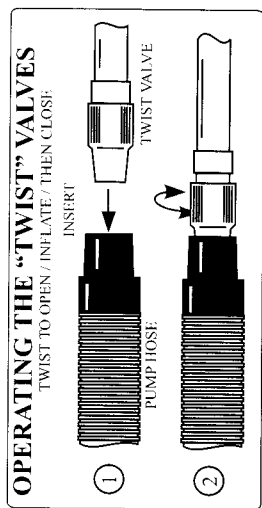


Figure 2. Inflate/Deflate Twist Valve

To begin inflating your kayak, you will need a **Bellows Foot Pump** or a **Double Action Hand Pump**. **Never use compressors, CO2 or compressed air as they may damage you kayak.**

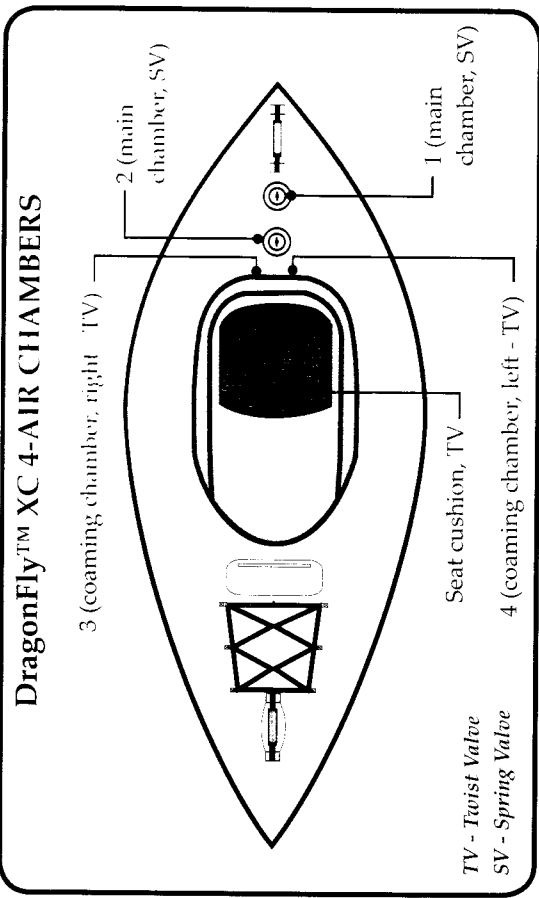


Diagram of Inflation Chambers

3.3 Inflating

IMPORTANT: Inflate your kayak in the following order. **Failure to follow these instructions may cause damage to your kayak. Do not over inflate.** Be sure to read directions on operating the spring valves and twist valves located in the section "*Understanding your valves*". Before inflating please be sure that the foam floor is positioned inside the kayak seating area, underneath the side inflation tubes. When the kayak is inflated it will hold the foam floor in place.

1. Inflate chamber 1 "main1" until the kayak looks about half way inflated.
2. Inflate chamber 2 "main2" until the kayak feels firm to touch. There should be just a few wrinkles visible on the side GRAY TUBE COVERS.
3. Inflate chamber 3 and 4 "coaming chamber" until firm.
4. Inflate seat cushion to desired firmness and attach to kayak using provided strap.
5. Make sure all valves are closed tightly and properly.

NOTE: Ideally you want to put about half of the air in Chamber 1 and half into chamber 2. This way if you were to lose pressure in one chamber then you would have the other chamber to float the kayak.

3.4 Over Inflation

CAUTION: Water temperature and weather will affect the air pressure of the kayak. In cold weather and water your kayak will lose some pressure. If this occurs, you may want to add a bit more air to the kayak to improve performance. In hot weather or prolonged sunlight, the air inside the kayak will expand. You must let some air out of the appropriate chambers to prevent the kayak from failing due to overpressure. You should avoid exposing your kayak to extreme temperatures (hot or cold).

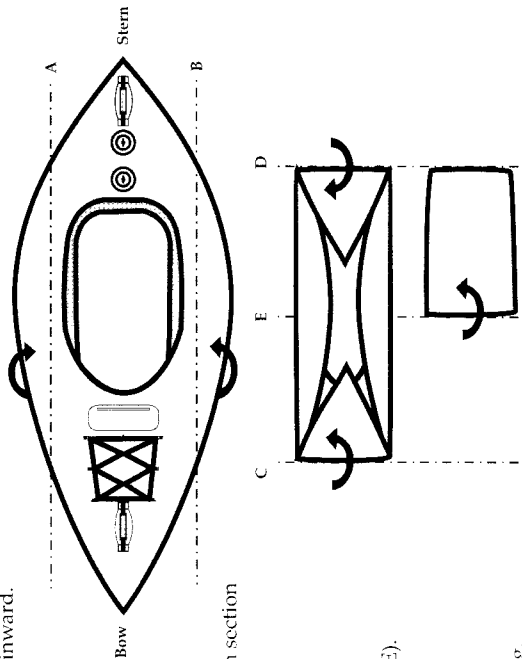
3.5 Deflation

1. Remove the cap from chamber 1 and 2.
2. Push stem inward and rotate to deflate position.
3. Twist the valve bodies open on chambers 3, 4 and 5.
4. Once the chambers are deflated you can use your pump to vacuum out any additional air for improve folding.

3.6 Folding

NOTICE: Reverse your pump to completely deflate all chambers.

1. Completely deflate all air chambers and thoroughly dry the kayak and remove the seat.
2. Fold sides A and B inward.



3. Fold Bow and Stern section inward (C and D).

4. Fold again at line (E).

5. Place into duffel bag.

4. GUIDELINES FOR USAGE

Paddlesports can be very dangerous and physically demanding. The user of this product should understand that participation in paddlesports may involve serious injury or death. Observe the following safety standards whenever using this product. The user of this product acknowledges both an understanding and an assumption of the risk involved in paddlesports.

After you have inflated your kayak and before you put it in the water, inspect your equipment for obvious signs of wear or failure. Review local rules and regulations and read again the "CAUTION" statement.

Most areas have local laws and regulations about the use and equipment of small boats. Usually a phone call to the local authorities will provide you with the needed information. Some areas may require that you register and display a registration number on the front of your kayak. Once you have been issued a number, it is best to affix it to the kayak by printing it on the material with a permanent ink marker. If you are required to display a sticker or vinyl letters, an inflatable boat ID kit can be purchased at most marine stores.

Your kayak is designed to be paddled with a double-bladed kayak paddle. Paddle with short and even strokes. Keep the blade close to the kayak and the paddle almost vertical. Pull with your lower hand and push with your upper hand. To reduce the amount of swaying at the front of the kayak, ease off on the force of your stroke. Paddling with a backward stroke can sometimes offer quick maneuverability.

ALWAYS practice safety and take the time to learn about the area where you are paddling. Get official information about the local tides and currents before paddling there. Be careful that you do not over estimate your strength, your endurance or your skill. Be careful never to under estimate weather conditions. Be aware of the dangers before you begin. Be aware of your skill level. Be sure you understand and accept the risk of these dangers. There are many paddling clubs all over the world. These can be a great source of information on places to paddle, people to paddle with and most importantly, continued safety practices.

5. PROPER CARE AND STORAGE

Your inflatable kayak is made of very durable materials. However, like anything else, proper use and care will increase the life of your kayak. Before storing your kayak, make sure it is both CLEAN and DRY. You may clean your kayak with a mild soap and water. **NEVER** use strong solvents to clean your kayak as they will destroy the material.

If your kayak has been used in salt water, rinse it off with fresh water and allow it to dry before storing. Use a dry towel to wipe up all moisture. It should be deflated and kept out of direct sunlight when stored. Avoid exposure to extreme temperatures (hot or cold). If your boat is exposed to freezing temperatures while storing, allow it to warm up before unfolding.

6. REPAIRS

All kayaks come with a repair kit that includes glue and several patches. This should remain with the kayak in the event that you may need it. If service is required for your kayak, please call 866-262-9076 for assistance.

6.1 Repairing Small Punctures and Cuts

1. Cut a rounded patch at least ¼" or ½" larger than the hole or cut.
2. Clean the area where the patch will be placed with water and/or mild soap.
3. Make sure all surfaces are dry.
4. In a well ventilated area, spread a thin layer of glue on both the patch and on the damaged area. Let it sit for three to five minutes or until tacky.

6.2 Repairing Pinholes

1. Inflate the PVC tube. Locate the pinhole by sponging soapy water over the tube until you see air bubbles. Mark the location of the pinhole.
2. Deflate the tube and dry the affected area. Apply a drop of glue to the pinhole
3. Allow glue to dry completely.
4. Do not inflate the kayak for at least twelve hours.

7. TROUBLESHOOTING

PROBLEM SOLUTION

- Does not hold air while inflating**
The spring valve uses a plunger system. The only time the plunger should be in the open position is when you are deflating. Make sure that the plunger is closed to inflate. Push the plunger in and rotate counter-clockwise.
- The kayak is sagging.**
Be sure that the right pump is being used. You need a bellows foot pump or a double action hand pump. A 12-V electric does not supply enough pressure to fully inflate the kayak. The 12-V can be used to partially inflate the kayak but one of the other pumps is needed to top it off.
- The kayak will not hold full pressure for more than couple of hours.**
Make sure that the plunger is in the closed position. It should only be open when deflating. If it is open, the only seal is the black rubber gasket inside the cap. Even then, a little air may still leak out.
- The kayak still loses air.**
If you have checked all the previous possible reasons for the kayak losing air, then there may be a pinhole or hole somewhere on the tube. Pull tube from outer covers. Inflate. If you cannot see or hear where a leak may be, take a clean rag with soapy water and begin rubbing the tube. If a hole is present, bubbles will continually form. Repair using repair kit. If it is a very small pinhole, a dab of the glue may be sufficient.
- The tube is kinked or bent.**
The tube just needs to be adjusted. When kayak is fully deflated try adjusting the position of the tube inside of the outer shell.
- The fin is bent.**
After inflating the kayak, turn upside down and leave out in sun for approximately ten minutes. Fin will conform to its original shape. Even if it is slightly bent, it will not affect the kayaks performance.
- There is water in the kayak.**
Water will drip into the kayak off of your paddle. Do not be alarmed. Simply dry it off before putting kayak away. You can also get a spray skirt from our accessories list from a dealer. This will help keep the inside of the kayak dry as well as you.
- The kayak drifts to one side.**
A kayak will always head in the direction of your last stroke. If the tube is not aligned inside of the cover, this will also cause drift.

Note: If your state requires this document of licensing your boat, please contact Advanced Elements Customer Service Department for completion, or for more information.

MANUFACTURER'S STATEMENT OF ORIGIN FOR A VESSEL SOLD IN THE STATE OF _____

The undersigned manufacturer hereby certifies that the new boat described below, the property of said manufacturer, has been transferred this _____ day of _____, 20____ on Invoice# _____ to: _____

Owner's/Dealer's Name _____
 Address _____
 City, State, Zip _____
 Model Year _____ Manufacturer's Hull Identification# _____
 DragonFly™ XC Kayak (AE1021) _____ HIN# _____

Type: Kayak Hull Material: PVC/Polyester
 Length Overall: 8'4" Beam: 34"
 U.S. Coast Guard Capacity Plate Information (where applicable):
 Maximum persons capacity in whole persons: 250 lbs (113 kg)
 Maximum weight capacity (persons & gear): 250 lbs (113 kg)

The manufacturer further certifies that this was the first transfer of such new boat and that all information given herein is true and accurate to the best of their knowledge



P.O. Box 5128 Concord, CA 94524

Signature _____
 FOR VALUE RECEIVED, in the amount of \$ _____

FIRST ASSIGNMENT

the undersigned hereby transfers the Certificate of Origin and the boat described therein

to _____
 Address _____

and certifies that the boat is new and has not been registered in this or any other state; Advanced Elements, Inc. also warrants the title of said boat at time of delivery, subject only to the liens and encumbrances as set out below:

Amount of Lien _____ Date _____ To whom Due _____ Address _____
 Dates _____ 20____, at _____, By: _____

Transferrer (Firm name) Sign Here _____ who by me being duly sworn under oath says the statements set forth above are true and correct. Subscribed and sworn to me before this _____ day of _____ 20____

_____, Notary Public Date commission expires _____
 (SEAL)

LIMITED WARRANTY

Advanced Elements, Inc. warrants this product to be free from defects in material or workmanship for a period of one year from the date of purchase. Products that prove to be defective under conditions of normal and proper use during the warranty period because of defects in workmanship or material will be replaced or repaired without charge. For warranty service, contact Advanced Elements, Inc.

Advanced Elements, Inc. shall accept all warranty claims, and in the event of a defect, repair or replace the defective part or entire item, at its option. The purchaser must, before return of a defective product, obtain from Advanced Elements, Inc. a return authorization number and return center address. Please write or call as listed below. Once an authorization number is obtained, the purchaser must ship the product TO: A.D. ELEMENTS, Advanced Elements, Inc. for repair. Do not ship to P.O. Box address, as it may be sent back.

This warranty does NOT cover

Products used for rental, for hire or in professionally guided tours, and other uses not considered normal recreational purposes; and punctures, cuts, and abrasions sustained in normal use; and items involved in accidents; and items damaged in white water mishaps, and other unreasonable uses or improper storage.

Advanced Elements, Inc. shall within (30) days from receipt of an authorized return from purchaser, perform its responsibilities in conformance with this warranty.

HERE ARE NO WARRANTIES WHICH EXTEND BEYOND THE DESCRIPTION OF THE FACE HEREOF. ADVANCED ELEMENTS SHALL NOT BE HELD LIABLE FOR INCIDENTAL AND CONSEQUENTIAL DAMAGES.

THIS WARRANTY IS INCLUSIVE IN LIEU OF ALL OTHER WARRANTIES.

This warranty gives you specific legal rights, and you may also have other rights that vary from state to state.

Advanced Elements, Inc.

P.O. Box 5128, Concord, CA 94524

Toll Free - 866-262-9076 - email info@advancedelements.com - www.advancedelements.com

(cut along here)

ADVANCED ELEMENTS WARRANTY REGISTRATION

(PLEASE TYPE OR PRINT CLEARLY)

Please complete and mail, and to Advanced Elements within 10 days. It will register your product.

Mail to: **Advanced Elements, Inc.**
P.O. Box 5128, Concord, CA 94524
Attn: Warranty Department

Owner's Name _____

Address _____

City _____

Model _____

Purchase Date _____

Store Name _____

Store Address _____

City _____

State _____

Zip _____

Thank you for responding to the following.....

1. How did you first learn of the product?

Dealer Friend Magazine Radio TV Catalog Other

2. What most influenced your decision to purchase this product?

Price Features Style Quality Other

Declaration of Conformity

(according to ISO/IEC Guide 22 and EN 45014)

Manufacturer's Name: Advanced Elements, Inc.

Manufacturer's Address: P.O. Box 5128
Concord, CA 94524

declares, that the product:

Product Name: Dragonfly™ XC Kayak
Model Number (s): AE1021

to which this declaration relates, **meets the essential health and safety requirements** and is in conformity with the relevant EU Directives listed below:

General Product Safety Directive

using the relevant section of the following EU standards and other normative documents:

EN / ISO 6185-1 : 2006

ABYC H28-76

Date: January 1, 2006

Clay Haller

Clay Haller, President

This product complies with European directives for recreational vessels as published by the International Organization for Standardization (ISO).