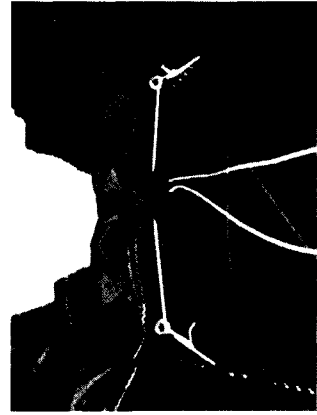


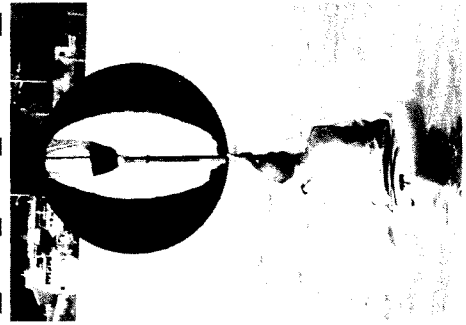
# WindPaddle

For An Easy How-To-Video go to  
[www.windpaddle.com](http://www.windpaddle.com)

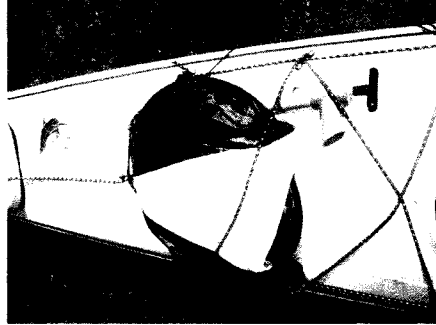
- At 16 oz. the WindPaddle is the lightest and safest small-craft sail available.
- Designed to depower instantly in gusts so it will not overpower your craft.
- Quick, easy and safe to launch/ deploy and douse while out on the water in your craft.
- Stows compactly below decks in 1/8th it's deployed size .
- Available in two models: "Adventure" & "Sport".



"Adventure Model" Deck Mounted



The "Sport" Model in Action



"Adventure Model" Stowed on Deck

## Launch WindPaddle™

- 1 Remove WindPaddle from pouch and remove compression strap.
- 2 Mount on deck (Adventure model) or place paddle blade in pouch (Sport model.)

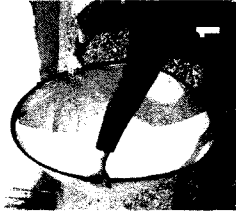
Raise sail into the wind and enjoy. (Note: Adventure model can be re-coiled while deck-mounted and held with a deck bungee cord for quick deployment.)

## Douse/Stow WindPaddle™

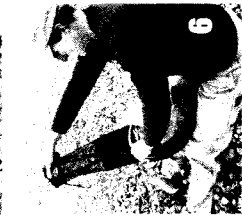
- 1 Lower WindPaddle horizontally in front of you, fold/recoil and stow on deck or in pouch.

## Coiling & Stowing WindPaddle™

- 1 Hold WindPaddle out in front with pouch/pocket in the 6- o'clock position.
- 2 Grab the WindPaddle in the 10-o'clock and 2-o'clock position with thumbs pointed down.
- 3 Bend down the top of the sail forming a "Potato Chip."



- 4 Continue to fold down and under being sure not to let the sail spin or twist.
- 5 Now bring hands together (thumbs should now be pointing up) and cross sides over each other.
- 6 With the sail now coiled in thirds, attach compression strap, tighten and invert pocket over the sail.



For customer service questions, please email: [info@windpaddle.com](mailto:info@windpaddle.com)